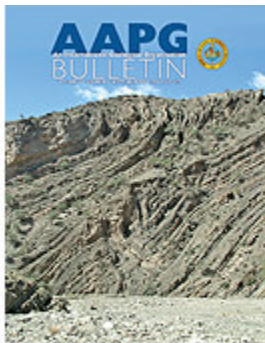


Dave Barthelmy

**From:** Gerald Buckley [gbuckley@aapg.org]  
**Sent:** Tuesday, September 04, 2007 11:50 PM  
**To:** daba@wt.net  
**Subject:** Your September AAPG Bulletin Is Available



Your September AAPG Bulletin is [now available](#). Enjoy!

- [Geographic Search](#) Draw a rectangle on a map, get quick, high-quality results! A [GIS-UDRIL](#) innovation.
- Audio abstracts are back! (See below or [click here](#))
- Changed your contact info lately?  
Update your records via [the Members Only site](#).

As always, we look forward to [member feedback](#).

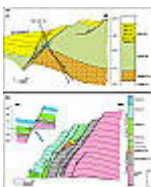


#### IN THIS ISSUE:



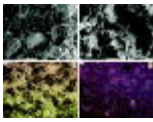
##### **E&P NOTES: A regional look at Morrow Formation gas in light of conflicting resource development in southeast New Mexico**

The future potential and development scenarios of the underdeveloped Morrow Formation, southeast New Mexico, are discussed with the aid of structural and stratigraphic maps of reservoir horizons and a regional depositional picture that is correlated to field-scale interpretations. [Read more...](#) Or listen to the [audio abstract](#) now.



##### **GEOHORIZONS: Methodology for risking fault seal capacity: Implications of fault zone architecture**

A methodology is introduced that quantifies the risk associated with a seal for fault-bounded prospects, reducing uncertainty in assessment and better representing the actual complexity of faults than the abrasion-type shale gouge ratio algorithm (SGR) that is commonly utilized for estimating fault sealing capacity. [Read more...](#) Or listen to the [audio abstract](#) now.



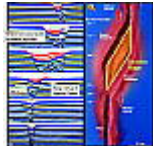
### **Reservoir quality, textural evolution, and origin of fault-associated dolomites**

The origins, as well as the spatial variability in reservoir quality, of many fault-associated dolomites are poorly understood. Techniques for predictive modeling of faulted dolomite and the understanding of dolomitizing mechanisms within equatorial carbonates are improved through detailed study of the Taballar Limestone, northeast Borneo. [Read more...](#) Or listen to the [audio abstract](#) now.



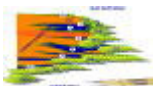
### **Organic geochemistry of oil and source rock strata of the Ordos basin, north-central China**

The Ordos Basin, north-central China, has a long history of exploration and production, yet many important aspects of this petroleum system, such as which strata are the source rock, remain unknown. Results of a geochemical study of oil samples and subsurface strata bear directly on these issues and should drive future exploration strategies. [Read more...](#) Or listen to the [audio abstract](#) now.



### **Quantifying the origin and geometry of circular sag structures in northern Fort Worth Basin, Texas: Paleocave collapse, pull-apart fault systems, or hydrothermal alteration?**

Borehole image interpretation guidelines are established for siliclastic shoreline environments based on data from the Ferron Sandstone, Utah. Boreholes were drilled and logged adjacent to the outcrop, allowing the methodology for stratigraphic interpretation of the image logs to be developed by correlation to the cores and outcrop. [Read more...](#) Or listen to the [audio abstract](#) now.



### **Interpreting shoreline sands using borehole images: A case study of the Cretaceous Ferron Sandstone Member in Utah**

A potential petroleum system appears to have operated during the Paleozoic in the Skagerrak Graben, offshore Norway, and has likely suffered relatively less reservoir uplift, erosion, and destruction than the onshore Oslo Graben, making preservation of any petroleum accumulations more plausible. [Read more...](#) Or listen to the [audio abstract](#) now.

### **DISCUSSION & REPLY: Structurally controlled hydrothermal dolomite reservoir facies: An overview**

Friedman contends that the term "hydrothermal dolomite" is confusing and meaningless and suggests the usage of a different classification system. However, Davies and Smith maintain that the term is applicable and useful to describe a potentially large amount of dolomite deposits worldwide and suggest that a basic lack of understanding of hydrothermal dolomitization exists. [Read more...](#)



---

The photo above is used in accordance of the [Creative Commons License](#) and is attributed to [Alkiol](#).

Copyright 2007 American Association of Petroleum Geologists, P.O.Box 979, Tulsa, OK, 74101-0979, USA.

If you would prefer not to receive email announcements from the AAPG, or if you've changed your email address, please contact us at: 1 (918) 584-2555 or 1 (800) 364-2274 (from the US and Canada) or by [email](#)